

SMB SERIES

SUBMINIATURE COAXIAL CONNECTORS



Description

The Jy Chyun serial 50 ohm impedance-rated SMB compact coaxial cable connectors have the SMB series features a 4 GHz working bandwidth. The SMB series features a compact structure that can be connected and trimmed off swiftly, while the 75 ohm impedance-rated. Jy Chyun's SMB series is widely used in microwave communications and other non-defense related telecommunications applications as an alternative for optimal cost yield.

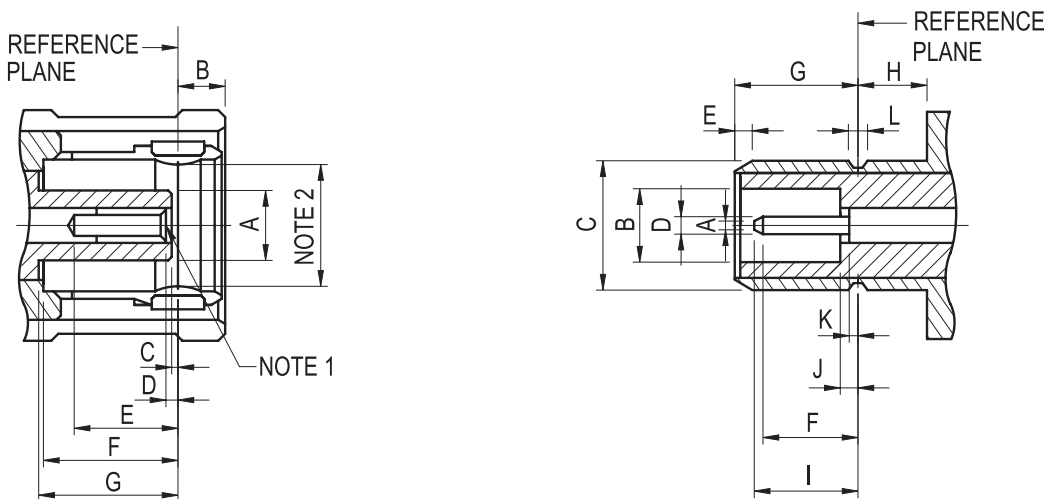
Applications

- Antennas
- Wireless
- Instrumentation
- PC / LAN
- Telecommunications
- Test and Measurement
- Base Stations
- Microwave Components
- Radio Boards
- Video Systems
- Process Controls

Specifications

Electrical		Material		
Impedance	50 ohms	Parts Name	Material	Finish
Frequency Range	0-4 GHz	Body, metal parts	Brass per QQ-B-626	Nickel or Gold*
Dielectric Withstanding Voltage	750V 1000V	Center Contacts	Plug: Brass per QQ-B-626 Jack: Beryllium copper per QQ-B-530	30u" Gold
VSWR	Straight: 1.3 max. Right Angle: 1.5 max.	Insulators	PTFE	None
Working Voltage 50Hz rms	250V - 335V Max.	Gaskets	Silicone rubber	None
Working Voltage DC	350V - 450V Max.	Crimp Ferrules	Seamless copper tubing alloy	Nickel
Insulation Resistance	1000 megohms min.	*All cable connections are nickel plated; all solder connections are gold plated.		
Contact Resistance	Inner Conductor ≤ 6 milliohms Outer Conductor ≤ 2.5 milliohms	Note : Other Material/Finish is Available on Request.		

Interface Mating Dimensions



SMB SERIES

PLUG		
Letter	Millimeters	
	Minimum	Maximum
A	2.00(.079)	2.06(.081)
B	-	1.62(.064)
C	0.18(.007)	-
D	0.18(.007)	0.94(.037)
E	2.97(.117)	-
F	3.58(.141)	-
G	3.58(.141)	-

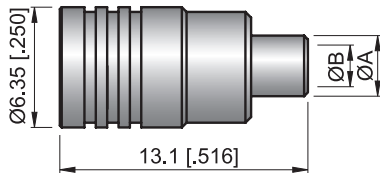
JACK		
Letter	Millimeters	
	Minimum	Minimum
A	-	0.25(.010)
B	2.08(.082)	2.16(.085)
C	3.66(.144)	3.71(.146)
D	0.48(.019)	0.53(.021)
E	0.00	-
F	1.32(.052)	-
G	3.33(.131)	3.58(.141)
H	2.03(.080)	-
I	-	2.97(.117)
J	-	0.18(.007)
k	-	0.18(.007)
L	0.69(.027)	0.94(.037)

NOTE 1 : I.D. TO MEET VSWR AND CONTACT RESISTANCE WHEN MATED WITH 0.48/0.53 MM DIA. PIN.

NOTE 2 : MUST MEET THE FORCE TO ENGAGE AND DISENGAGE WHEN MATED WITH MATING PART.

Semi-Rigid Cable

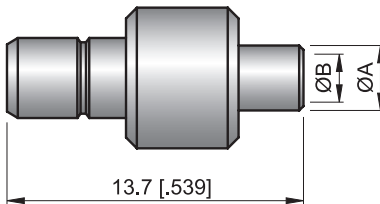
STRAIGHT PLUG, Solder



Part Number.	Cable Type	Dimension	
		A	B
SMB-A5612101S3	Semi-Rigid .085	3.2(.126)	2.2(.087)
SMB-A5612101S4	Semi-Rigid .141	4.6(.181)	3.6(.142)

Semi-Rigid Cable

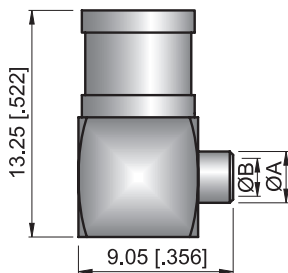
STRAIGHT JACK, Solder



Part Number.	Cable Type	Dimension	
		A	B
SMB-A5712101S3	Semi-Rigid .085	3.2(.126)	2.2(.087)
SMB-A5712101S4	Semi-Rigid .141	4.6(.181)	3.6(.142)

Semi-Rigid Cable

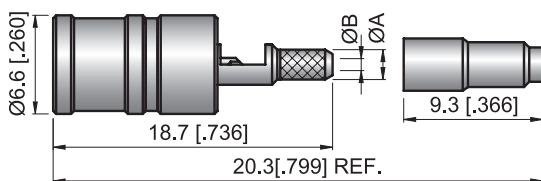
RIGHT ANGLE PLUG, Solder



Part Number.	Cable Type	Dimension	
		A	B
SMB-A5622102S3	Semi-Rigid .085	3.2(.126)	2.2(.087)
SMB-A5622102S4	Semi-Rigid .141	4.6(.181)	3.6(.142)

Flexible Cable

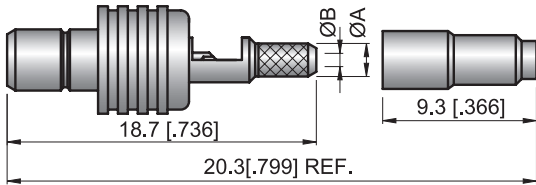
STRAIGHT PLUG, Crimp-SIDE SOLDER TYPE



Part Number.	Cable Type	Dimension	
		A	B
SMB-A5613101M1	Ø1.13/mm	2(.079)	0.8(.031)
SMB-A5613101M2	Ø1.32/mm	1.75(.069)	0.8(.031)
SMB-A5613101M4	Ø1.37/mm	2(.079)	1(.039)
SMB-A5613101R7	RG178.RG196	2(.079)	1(.039)

Flexible Cable

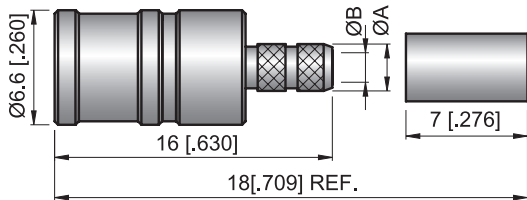
STRAIGHT JACK, Crimp-SIDE SOLDER TYPE



Part Number.	Cable Type	Dimension	
		A	B
SMB-A5713101M1	Ø1.13/mm	2(.079)	0.8(.031)
SMB-A5713101M2	Ø1.32/mm	1.75(.069)	0.8(.031)
SMB-A5713101M4	Ø1.37/mm	2(.079)	1(.039)
SMB-A5713101R7	RG178.RG196	2(.079)	1(.039)

Flexible Cable

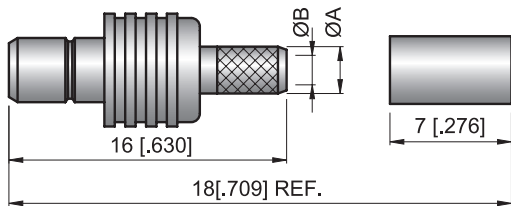
STRAIGHT PLUG, Crimp



Part Number.	Cable Type	Dimension	
		A	B
SMB-A5611101R5	RG174.RG188.RG316	2.7(.106)	1.7(.067)
SMB-A5611101R4	RG58.RG141.RG303	4.6(.181)	3.2(.126)
SMB-A5611102R7	RG178.RG196	2(.079)	1(.039)

Flexible Cable

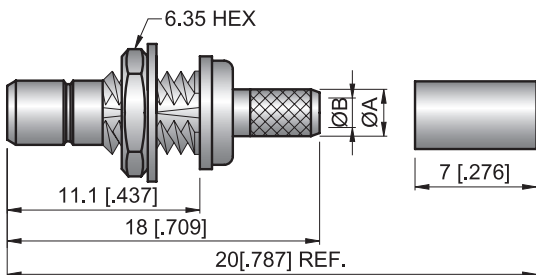
STRAIGHT JACK, Crimp



Part Number.	Cable Type	Dimension	
		A	B
SMB-A5711101R5	RG174.RG188.RG316	2.7(.106)	1.7(.067)
SMB-A5711102R7	RG178.RG196	2(.079)	1(.039)

Flexible Cable

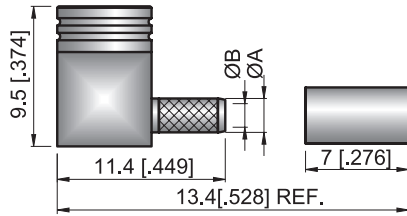
BULKHEAD STRAIGHT JACK, Crimp



Part Number.	Cable Type	Dimension	
		A	B
SMB-A5714103R5	RG174.RG188.RG316	2.7(.106)	1.7(.067)
SMB-A5714103R7	RG178.RG196	2(.079)	1(.039)

Flexible Cable

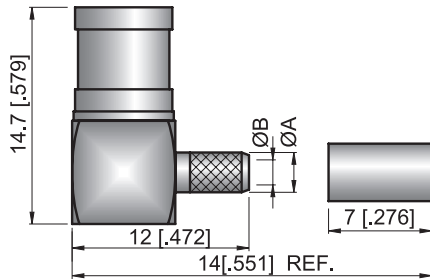
RIGHT ANGLE PLUG, Crimp



Part Number.	Cable Type	Dimension	
		A	B
SMB-A5621103R5	RG174.RG188.RG316	2.7(.106)	1.7(.067)
SMB-A5621103R7	RG178.RG196	2(.079)	1(.039)

Flexible Cable

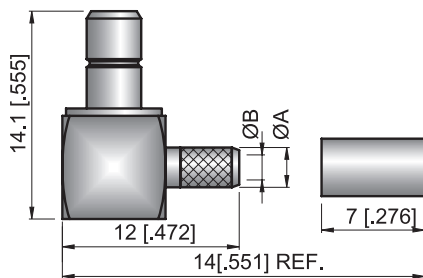
RIGHT ANGLE PLUG, Crimp



Part Number.	Cable Type	Dimension	
		A	B
SMB-A5621102R5	RG174.RG188.RG316	2.7(.106)	1.7(.067)
SMB-A5621104R7	RG178.RG196	2(.079)	1(.039)

Flexible Cable

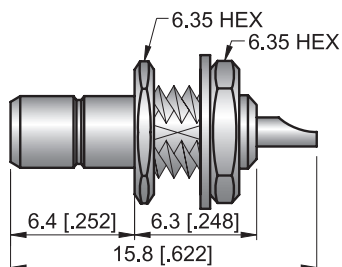
RIGHT ANGLE JACK, Crimp



Part Number.	Cable Type	Dimension	
		A	B
SMB-A5721102R5	RG174.RG188.RG316	2.7(.106)	1.7(.067)
SMB-A5721104R7	RG178.RG196	2(.079)	1(.039)

Bulkhead Receptacle

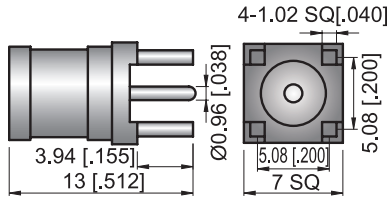
BULKHEAD STRAIGHT JACK



Part Number.	Cable Type	Dimension	
		A	B
SMB-A5714103Z0			

P.C.B Mount

STRAIGHT PLUG

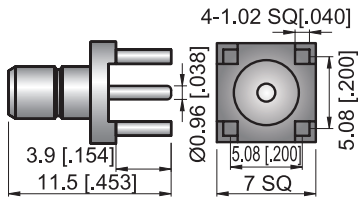


Part Number.	Cable Type	Dimension	
		A	B
SMB-A5616101Z0			

*REMARK : PCB MOUNTING HOLES REF. TO "MH B"

P.C.B Mount

STRAIGHT JACK

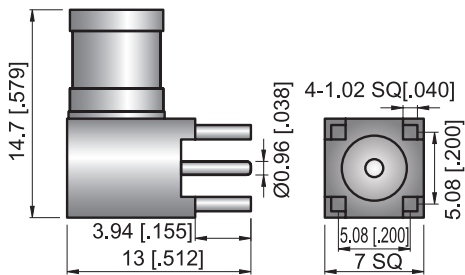


Part Number.	Cable Type	Dimension	
		A	B
SMB-A5716101Z0			

*REMARK : PCB MOUNTING HOLES REF. TO "MH B"

P.C.B Mount

RIGHT ANGLE PLUG

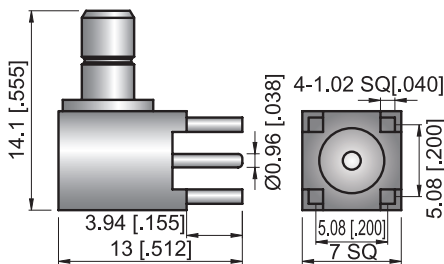


Part Number.	Cable Type	Dimension	
		A	B
SMB-A5626102Z0			

*REMARK : PCB MOUNTING HOLES REF. TO "MH B"

P.C.B Mount

RIGHT ANGLE JACK

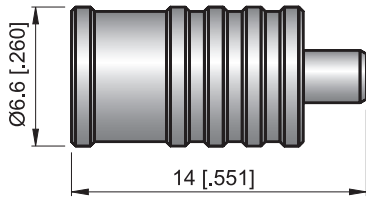


Part Number.	Cable Type	Dimension	
		A	B
SMB-A5726102Z0			

*REMARK : PCB MOUNTING HOLES REF. TO "MH B"

Antenna

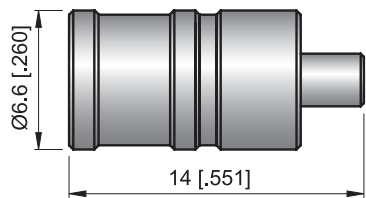
STRAIGHT PLUG, Crimp



Part Number.	Cable Type	Dimension	
		A	B
SMB-A5611101A1			

Antenna

STRAIGHT PLUG, Crimp



Part Number.	Cable Type	Dimension	
		A	B
SMB-A5611102A1			