

MMCX SERIES

MICROMINIATURE COAXIAL CONNECTORS



Description

The Jy Chyun MMCX series is a featuring of 6 GHz, 50 ohm impedance coaxial connector system, primarily serves to support the surface mount coaxial connector systems and the extension via the conventional soft and semi-soft cable jack, particularly ideal in surface mount and compact packaging applications.

Applications

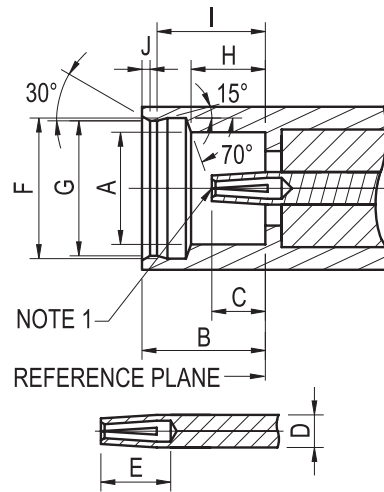
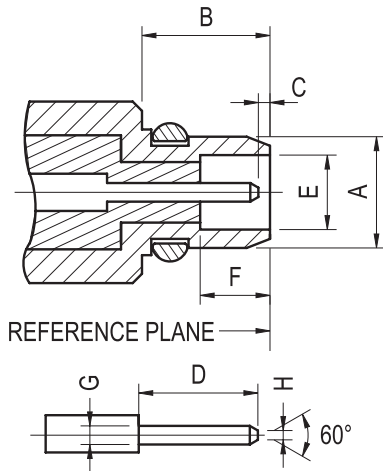
- Antennas
- Wireless LANs
- Cell Phones
- Wireless Applications
- Broadband Communications
- RF Test Ports
- Radio Boards
- Point-of-Sale PCMCIA cards
- Satellite Reception Terminals
- Instrumentation
- Relay Stations

Specifications

Electrical		Material		
Impedance	50 ohm	Parts Name	Material	Finish
Frequency Range	0-6 GHz	Body, Metal Parts	Brass per QQ-B-626	Gold
Working Voltage	170 VRMS max. at sea level	Center Contacts	Plug:Brass per QQ-B-626	
Dielectric Withstanding Voltage	500 VRMS min. at sea level		Jack:Beryllium copper per QQ-C-530	
VSWR	Straight: 1.3 max.	Insulators	PTEF	None
	Right Angle: 1.5 max.	Crimp Ferrules	Annealed copper	Gold
Contact Resistance	Center Contact: 5 Milliohms Max. Outer Contact: 2.5 Milliohms Max.	Note : Other Material/Finish is Available on Request.		
Insulator Resistance	1000 megohms min.			

Environmental		Mechanical	
Temperature Range	-40°C thru 90°C	Engagement Force	3.4 lbs. max.
Temperature Shock	Mil-STD-202, Method 107	Disengagement Force	1.4 lbs.-3.4lbs.
Humidity	Mil-STD-202, Method 103, Condition B	Contact Retention	2.3 lbs. min.
Vibration	3 cycles, 3 opposite directions, 10-150 Hz, 10-60 Hz:0.75 mm/ 0.030in., 60-150 Hz 10G's	Durability(Mating)	500 cycles min.
	Mechanical Shock		

Interface Mating Dimensions



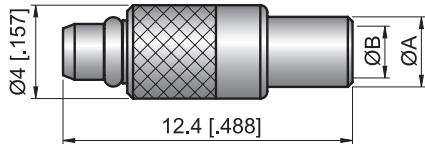
PLUG		
Letter	Millimeters	
	Minimum	Maximum
A	-	2.40(.094)
B	2.70(.106)	-
C	0.00	0.25(.010)
D	-	3.15(.124)
E	1.58(.062)	1.62(.064)
F	1.45(.057)	-
G	0.38(.015)	0.42(.017)
H	-	0.20(.008)

JACK		
Letter	Millimeters	
	Minimum	Maximum
A	2.41(0.95)	-
B	2.60(.102)	-
C	0.90(.035)	1.20(.047)
D	0.68(.027)	0.72(.028)
E	1.40(.055)	-
F	3.00(.118)	3.04(.120)
G	2.87(.113)	2.90(.114)
H	1.57(.062)	1.63(.064)
I	2.30(.091)	2.34(.092)
J	-	0.23(.009)

NOTE 1 : I.D. TO MEET VSWR AND CONTACT RESISTANCE WHEN MATED WITH 0.38/0.42 MM DIA. PIN.

Semi-Rigid Cable

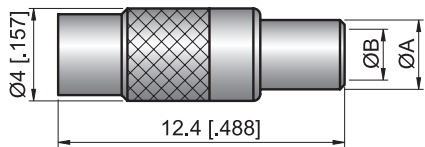
STRAIGHT PLUG, Solder



Part Number.	Cable Type	Dimension	
		A	B
MMCX-A5612101S2	Semi-Rigid .047	2.2(.087)	1.3(.051)
MMCX-A5612101S3	Semi-Rigid .085	3.2(.126)	2.2(.087)
MMCX-A5612101S4	Semi-Rigid .141	4.6(.181)	3.6(.142)

Semi-Rigid Cable

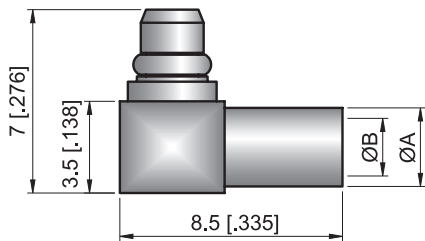
STRAIGHT JACK, Solder



Part Number.	Cable Type	Dimension	
		A	B
MMCX-A5712101S2	Semi-Rigid .047	2.2(.087)	1.3(.051)
MMCX-A5712101S3	Semi-Rigid .085	3.2(.126)	2.2(.087)
MMCX-A5712101S4	Semi-Rigid .141	4.6(.181)	3.6(.142)

Semi-Rigid Cable

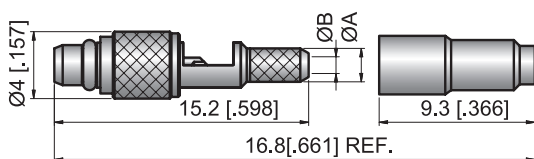
RIGHT ANGLE PLUG, Solder



Part Number.	Cable Type	Dimension	
		A	B
MMCX-A5622102S2	Semi-Rigid .047	2.2(.087)	1.3(.051)
MMCX-A5622102S3	Semi-Rigid .085	3.2(.126)	2.2(.087)
MMCX-A5622102S4	Semi-Rigid .141	4.6(.181)	3.6(.142)

Flexible Cable

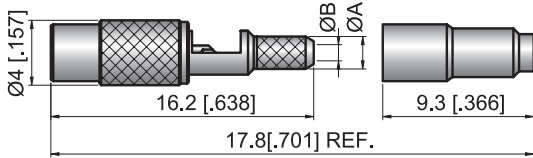
STRAIGHT PLUG, Crimp-SIDE SOLDER TYPE



Part Number.	Cable Type	Dimension	
		A	B
MMCX-A5613103M1	Ø1.13/mm	2(.079)	0.8(.031)
MMCX-A5613101M2	Ø1.32/mm	1.75(.069)	0.8(.031)
MMCX-A5613101M4	Ø1.37/mm	2(.079)	1(.039)
MMCX-A5613103R7	RG178.RG196	2(.079)	1(.039)

Flexible Cable

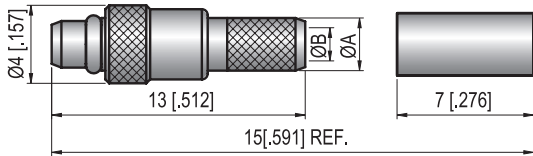
STRAIGHT JACK, Crimp-SIDE SOLDER TYPE



Part Number.	Cable Type	Dimension	
		A	B
MMCX-A5713101M1	Ø1.13/mm	2(.079)	0.8(.031)
MMCX-A5713101M2	Ø1.32/mm	1.75(.069)	0.8(.031)
MMCX-A5713101M4	Ø1.37/mm	2(.079)	1(.039)
MMCX-A5713103R7	RG178.RG196	2(.079)	1(.039)

Flexible Cable

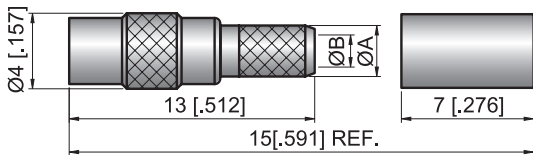
STRAIGHT PLUG, Crimp



Part Number.	Cable Type	Dimension	
		A	B
MMCX-A5611101R5	RG174.RG188.RG316	2.7(.106)	1.7(.067)
MMCX-A5611101R7	RG178.RG196	2(.079)	1(.039)

Flexible Cable

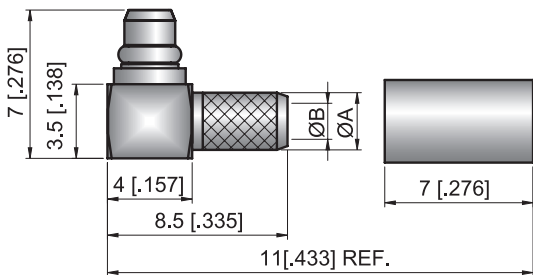
STRAIGHT JACK, Crimp



Part Number.	Cable Type	Dimension	
		A	B
MMCX-A5711101R5	RG174.RG188.RG316	2.7(.106)	1.7(.067)
MMCX-A5711101R7	RG178.RG196	2(.079)	1(.039)

Flexible Cable

RIGHT ANGLE PLUG, Crimp

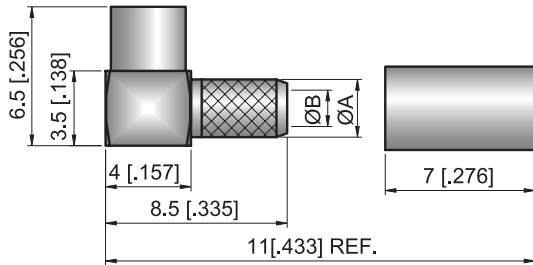


Part Number.	Cable Type	Dimension	
		A	B
MMCX-A5621102R5	RG174.RG188.RG316	2.7(.106)	1.7(.067)
MMCX-A5621102R7	RG178.RG196	2(.079)	1(.039)

*Reverse Polarity Series

Flexible Cable

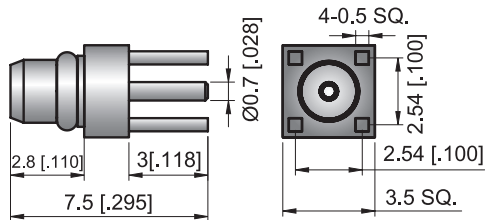
RIGHT ANGLE JACK, Crimp



Part Number.	Cable Type	Dimension	
		A	B
MMCX-A5721102R5	RG174.RG188.RG316	2.7(.106)	1.7(.067)
MMCX-A5721102R7	RG178.RG196	2(.079)	1(.039)

P.C.B Mount

STRAIGHT PLUG

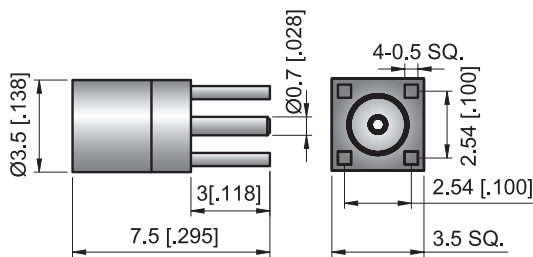


Part Number.	Cable Type	Dimension	
		A	B
MMCX-A5616101Z0			

*REMARK : PCB MOUNTING HOLES REF. TO "MH J"

P.C.B Mount

STRAIGHT JACK

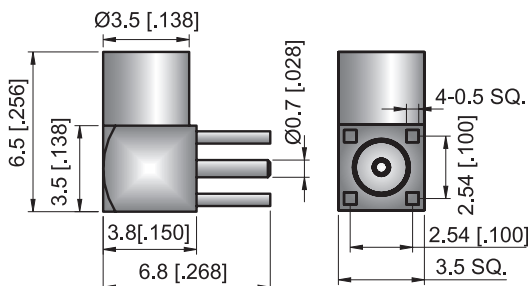


Part Number.	Cable Type	Dimension	
		A	B
MMCX-A5716101Z0			

*REMARK : PCB MOUNTING HOLES REF. TO "MH J"

P.C.B Mount

RIGHT ANGLE JACK

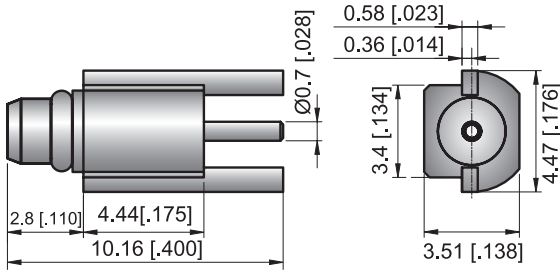


Part Number.	Cable Type	Dimension	
		A	B
MMCX-A5726102Z0			

*REMARK : PCB MOUNTING HOLES REF. TO "MH J"

P.C.B Mount

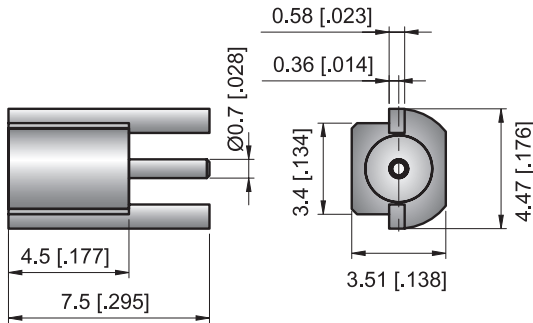
STRAIGHT PLUG-Edge Mount



Part Number.	Cable Type	Dimension	
		A	B
MMCX-A5616102Z0			

P.C.B Mount

STRAIGHT JACK-Edge Mount



Part Number.	Cable Type	Dimension	
		A	B
MMCX-A5716103Z0			