

# BNC SERIES

## MINIATURE COAXIAL CONNECTORS

### Description

A favorite in the adaptation of a wide range of aerial rods, Jy Chyun's BNC connectors feature an all-encompassing antenna mount, backed by exceptional electrical characteristics, conductivity and transmission functions, for they have been products painstakingly perfected by Jy Chyun over a quarter of a century. The matching axial coupler to Jy Chyun's BNC connector series features a minimum cross-section cutout, and is compact and cost efficiency to emerge as a choicest in cases of impedance-sensitive applications. The 50 ohm impedance -rated BNC connectors are adaptable to a bandwidth ranging from DC to 4 GHz applications, and the 75 ohm impedance-rated BNC connectors are adaptable to a bandwidth ranging from DC to 1 GHz. The two Crimp and Clamp types of the internally welded connectors come with a terminal transceiver, and the serial Jy Chyun connectors are also widely adopted in vided transmission and electronic communications applications.



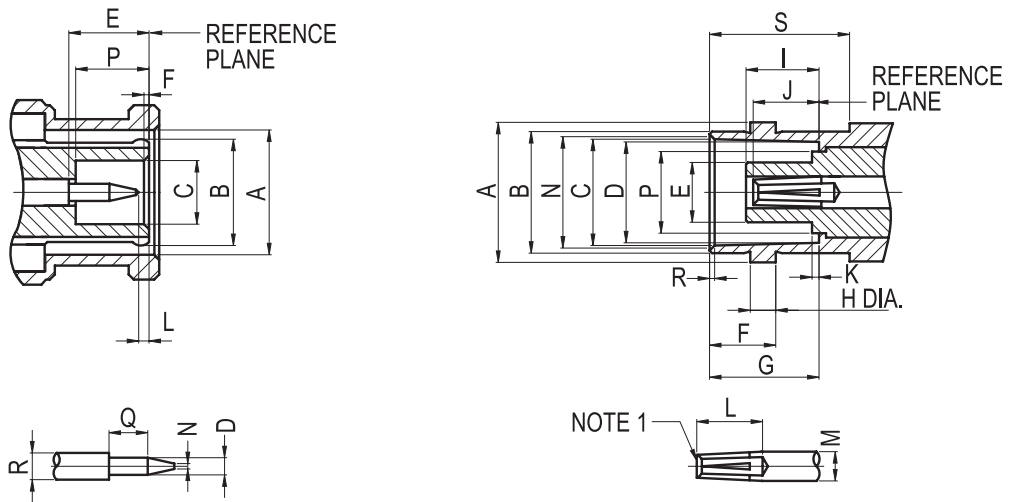
### Applications

- Antennas
- Instrumentation
- Computers / LANs
- Test and Measurement
- Broadcast
- Medical Equipment

# Specifications

| Electrical                      |                             |                 | Material  |   |          |
|---------------------------------|-----------------------------|-----------------|---|---|----------|
| Impedance                       | 50 ohms                     | 75 ohms         | Parts Name  | Material                                  | Finish   |
| Frequency Range                 | 0-4GHz                      | 0-2GHz          | Metal Parts   | Brass                                     | Nickel * |
| Voltage Rating                  | 500 VRMS                    | 500 VRMS        | Center Contacts   | Plug: Brass                               | Gold*    |
| Dielectric Withstanding Voltage | 1500 Volts                  | 1500 Volts      |   | Jack: Phosphor Bronze or Beryllium Copper |          |
| VSWR                            | 1.3 max. 0-4GHz             | 1.3 max. 0-2GHz | Insulators  | Delrin**                                  | None     |
| Contact Resistance              | Center Contact: 3 milliohms |                 | Clamp Gaskets   | Silicone Rubber, Synthetic rubber         |          |
|                                 | Outer Contact: 2 milliohms  |                 | Crimp Ferrules  | Annealed copper                           |          |
| Insulation Resistance           | 5000 megohms min.           |                 | *Silver plated body or contact is only available for special requirements<br>**Unless otherwise noted as Teflon |   |          |

# Interface Mating Dimensions



**BNC SERIES**

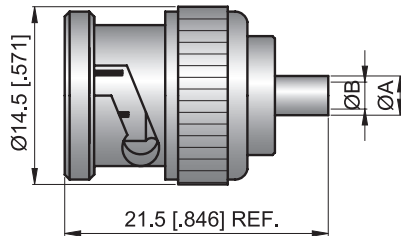
| PLUG   |                                       |            |
|--------|---------------------------------------|------------|
| Letter | Millimeters                           |            |
|        | Minimum                               | Maximum    |
| A      | 9.78(.385)                            | 9.91(.390) |
| B      | Flared to Meet Good Elctrical Contact |            |
| C      | 4.83(.190)                            | -          |
| D      | 1.32(.052)                            | 1.37(.054) |
| E      | 5.33(.210)                            | 5.84(.230) |
| F      | 0.15(.006)                            | 0.46(.018) |
| L      | 0.08(.003)                            | 1.02(.040) |
| N      | -                                     | 0.64(.025) |
| P      | 5.28(.208)                            | 5.79(.228) |
| Q      | 1.98(.078)                            | -          |
| R      | 2.06(.081)                            | 2.21(.087) |

| JACK   |             |             |
|--------|-------------|-------------|
| Letter | Millimeters |             |
|        | Minimum     | Minimum     |
| A      | 10.97(.432) | 11.07(.436) |
| B      | 9.60(.378)  | 9.70(.382)  |
| C      | 8.31(.327)  | 8.46(.333)  |
| D      | 8.10(.319)  | 8.15(.321)  |
| E      | -           | 4.72(.186)  |
| F      | 5.18(.204)  | 5.28(.208)  |
| G      | 8.31(.327)  | 8.51(.335)  |
| H      | 1.91(.075)  | 2.06(.081)  |
| I      | 4.78(.188)  | 5.28(.208)  |
| J      | 4.72(.186)  | 5.23(.206)  |
| k      | -           | 0.15(.006)  |
| L      | 4.95(.195)  | -           |
| M      | 2.06(.081)  | 2.21(.087)  |
| N      | 8.79(.346)  | 9.04(.356)  |
| P      | -           | 6.50(.256)  |
| R      | 0.38(.015)  | 0.76(.030)  |
| S      | 10.52(.414) | -           |

NOTE 1 : I.D. TO MEET VSWR AND CONTACT RESISTANCE WHEN MATED WITH 1.32/1.37 MM DIA. PIN.

## Semi-Rigid Cable

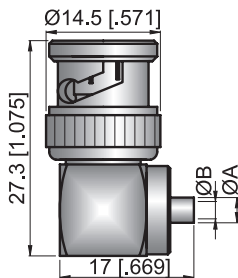
STRAIGHT PLUG, Solder



| Part Number.   | Cable Type      | Dimension |           |
|----------------|-----------------|-----------|-----------|
|                |                 | A         | B         |
| BNC-A5612101S3 | Semi-Rigid .085 | 3.2(.126) | 2.2(.087) |
| BNC-A5612101S4 | Semi-Rigid .141 | 4.6(.181) | 3.6(.142) |

## Semi-Rigid Cable

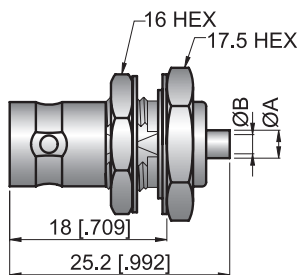
RIGHT ANGLE PLUG, Solder



| Part Number.   | Cable Type      | Dimension |           |
|----------------|-----------------|-----------|-----------|
|                |                 | A         | B         |
| BNC-A5622102S3 | Semi-Rigid .085 | 3.2(.126) | 2.2(.087) |
| BNC-A5622102S4 | Semi-Rigid .141 | 4.6(.181) | 3.6(.142) |

## Semi-Rigid Cable

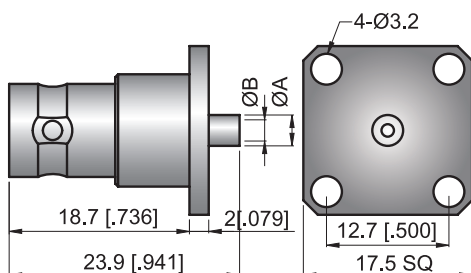
BULKHEAD STRAIGHT JACK, Solder



| Part Number.   | Cable Type      | Dimension |           |
|----------------|-----------------|-----------|-----------|
|                |                 | A         | B         |
| BNC-A5714101S3 | Semi-Rigid .085 | 3.2(.126) | 2.2(.087) |
| BNC-A5714101S4 | Semi-Rigid .141 | 4.6(.181) | 3.6(.142) |

## Semi-Rigid Cable

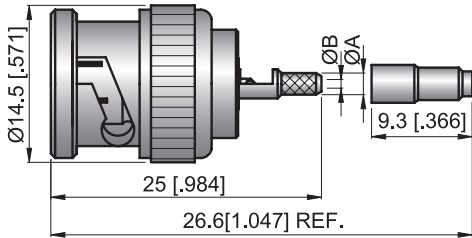
4-HOLE PANEL STRAIGHT JACK, Solder



| Part Number.   | Cable Type      | Dimension |           |
|----------------|-----------------|-----------|-----------|
|                |                 | A         | B         |
| BNC-A5715102S3 | Semi-Rigid .085 | 3.2(.126) | 2.2(.087) |
| BNC-A5715102S4 | Semi-Rigid .141 | 4.6(.181) | 3.6(.142) |

**Flexible Cable**

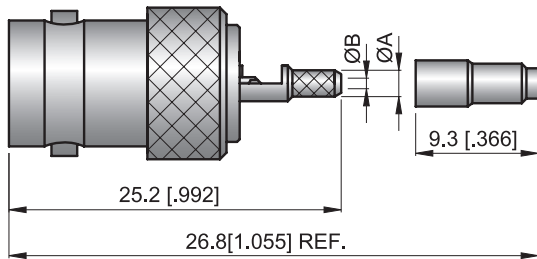
STRAIGHT PLUG, Crimp-SIDE SOLDER TYPE



| Part Number.   | Cable Type  | Dimension  |           |
|----------------|-------------|------------|-----------|
|                |             | A          | B         |
| BNC-A5613101M1 | Ø1.13/mm    | 2(.079)    | 0.8(.031) |
| BNC-A5613101M2 | Ø1.32/mm    | 1.75(.069) | 0.8(.031) |
| BNC-A5613101M4 | Ø1.37/mm    | 2(.079)    | 1(.039)   |
| BNC-A5613101R7 | RG178.RG196 | 2(.079)    | 1(.039)   |

**Flexible Cable**

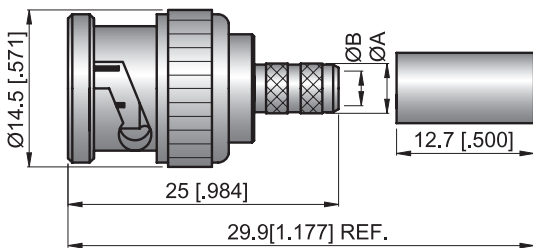
STRAIGHT JACK, Crimp-SIDE SOLDER TYPE



| Part Number.   | Cable Type  | Dimension  |           |
|----------------|-------------|------------|-----------|
|                |             | A          | B         |
| BNC-A5713101M1 | Ø1.13/mm    | 2(.079)    | 0.8(.031) |
| BNC-A5713101M2 | Ø1.32/mm    | 1.75(.069) | 0.8(.031) |
| BNC-A5713101M4 | Ø1.37/mm    | 2(.079)    | 1(.039)   |
| BNC-A5713101R7 | RG178.RG196 | 2(.079)    | 1(.039)   |

**Flexible Cable**

STRAIGHT PLUG, Crimp

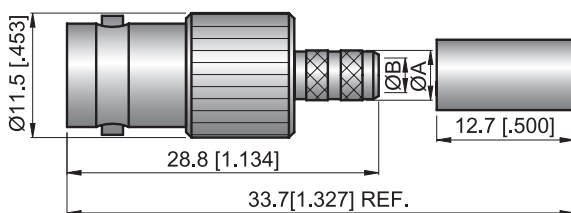


| Part Number.   | Cable Type        | Dimension |           |
|----------------|-------------------|-----------|-----------|
|                |                   | A         | B         |
| BNC-C5611101R4 | RG58.RG141.RG303  | 4.6(.181) | 3.2(.126) |
| BNC-C5611101R5 | RG174.RG188.RG316 | 2.7(.106) | 1.7(.067) |
| BNC-C5611101Y1 | YE50              | 5.3(.209) | 4.3(.169) |

\*Reverse Polarity Series

**Flexible Cable**

STRAIGHT JACK, Crimp

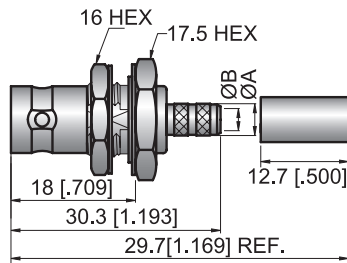


| Part Number.   | Cable Type        | Dimension |           |
|----------------|-------------------|-----------|-----------|
|                |                   | A         | B         |
| BNC-C5711101R4 | RG58.RG141.RG303  | 4.6(.181) | 3.2(.126) |
| BNC-C5711101R5 | RG174.RG188.RG316 | 2.7(.106) | 1.7(.067) |

\*Reverse Polarity Series

## Flexible Cable

BULKHEAD STRAIGHT JACK, Crimp

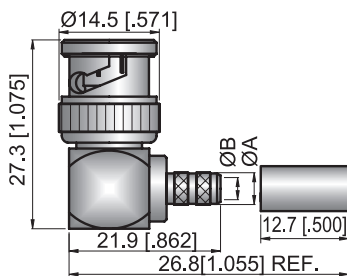


| Part Number.   | Cable Type        | Dimension |           |
|----------------|-------------------|-----------|-----------|
|                |                   | A         | B         |
| BNC-C5714102R4 | RG58.RG141.RG303  | 4.6(.181) | 3.2(.126) |
| BNC-C5714102R5 | RG174.RG188.RG316 | 2.7(.106) | 1.7(.067) |

\*Reverse Polarity Series

## Flexible Cable

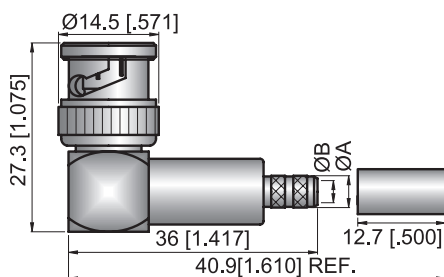
RIGHT ANGLE PLUG, Crimp



| Part Number.   | Cable Type        | Dimension |           |
|----------------|-------------------|-----------|-----------|
|                |                   | A         | B         |
| BNC-C5621102R4 | RG58.RG141.RG303  | 4.6(.181) | 3.2(.126) |
| BNC-C5621102R5 | RG174.RG188.RG316 | 2.7(.106) | 1.7(.067) |

## Flexible Cable

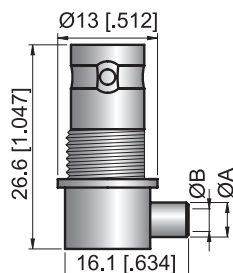
RIGHT ANGLE PLUG, Crimp



| Part Number.   | Cable Type        | Dimension |           |
|----------------|-------------------|-----------|-----------|
|                |                   | A         | B         |
| BNC-C5621103R4 | RG58.RG141.RG303  | 4.6(.181) | 3.2(.126) |
| BNC-C5621103R5 | RG174.RG188.RG316 | 2.7(.106) | 1.7(.067) |

## Flexible Cable

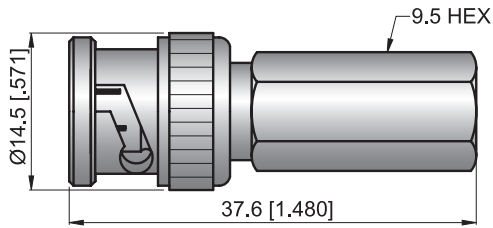
RIGHT ANGLE JACK, Solder



| Part Number.   | Cable Type       | Dimension |           |
|----------------|------------------|-----------|-----------|
|                |                  | A         | B         |
| BNC-C5722106R4 | RG58.RG141.RG303 | 4.6(.181) | 3.2(.126) |

**Flexible Cable**

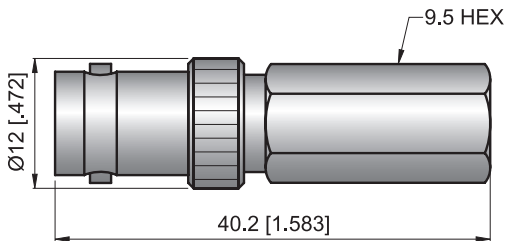
STRAIGHT PLUG, TWIST-ON



| Part Number.   | Cable Type       | Dimension |   |
|----------------|------------------|-----------|---|
|                |                  | A         | B |
| BNC-C5617104R4 | RG58.RG141.RG303 |           |   |

**Flexible Cable**

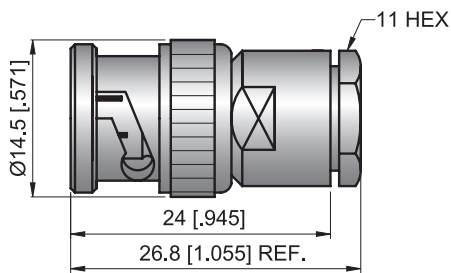
STRAIGHT JACK, TWIST-ON



| Part Number.   | Cable Type       | Dimension |   |
|----------------|------------------|-----------|---|
|                |                  | A         | B |
| BNC-C5717104R4 | RG58.RG141.RG303 |           |   |

**Flexible Cable**

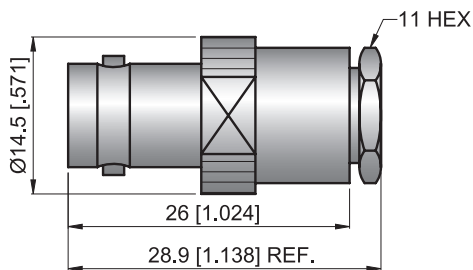
STRAIGHT PLUG, Clamp



| Part Number.   | Cable Type       | Dimension |   |
|----------------|------------------|-----------|---|
|                |                  | A         | B |
| BNC-C5617105R4 | RG58.RG141.RG303 |           |   |

**Flexible Cable**

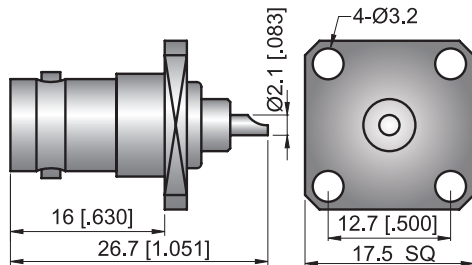
STRAIGHT JACK, Clamp



| Part Number.   | Cable Type       | Dimension |   |
|----------------|------------------|-----------|---|
|                |                  | A         | B |
| BNC-C5717105R4 | RG58.RG141.RG303 |           |   |

## Panel Receptacle

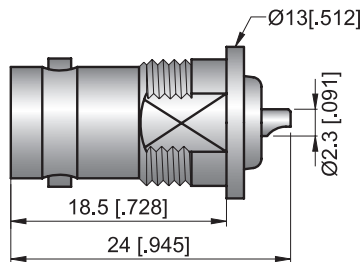
### 4-HOLE PANEL STRAIGHT JACK



| Part Number.   | Cable Type | Dimension |   |
|----------------|------------|-----------|---|
|                |            | A         | B |
| BNC-C5715102Z0 |            |           |   |

## Bulkhead Receptacle

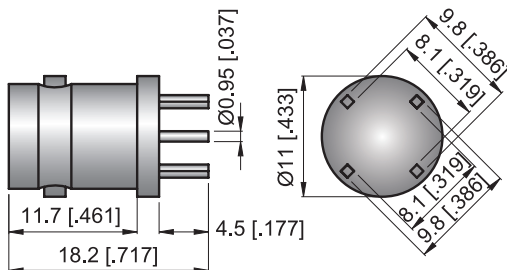
### BULKHEAD STRAIGHT JACK



| Part Number.   | Cable Type | Dimension |   |
|----------------|------------|-----------|---|
|                |            | A         | B |
| BNC-C5714101Z0 |            |           |   |

## P.C.B Mount

### STRAIGHT JACK

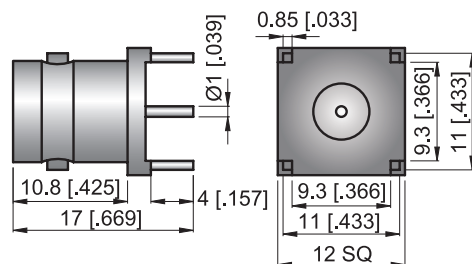


| Part Number.   | Cable Type | Dimension |   |
|----------------|------------|-----------|---|
|                |            | A         | B |
| BNC-C5716103Z0 |            |           |   |

\*REMARK : PCB MOUNTING HOLES REF. TO "MH C"

## P.C.B Mount

### STRAIGHT JACK

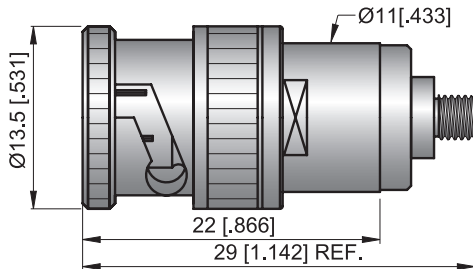


| Part Number.   | Cable Type | Dimension |   |
|----------------|------------|-----------|---|
|                |            | A         | B |
| BNC-C5716104Z0 |            |           |   |

\*REMARK : PCB MOUNTING HOLES REF. TO "MH E"

**Antenna**

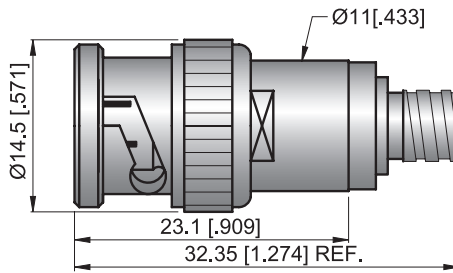
STRAIGHT PLUG, Clamp



| Part Number.   | Cable Type | Dimension |   |
|----------------|------------|-----------|---|
|                |            | A         | B |
| BNC-C5617101A1 |            |           |   |

**Antenna**

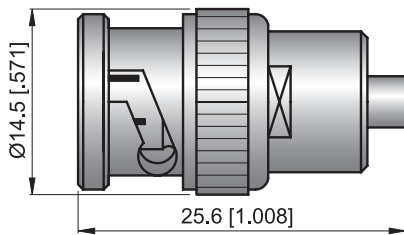
STRAIGHT PLUG, Clamp



| Part Number.   | Cable Type | Dimension |   |
|----------------|------------|-----------|---|
|                |            | A         | B |
| BNC-C5617103A1 |            |           |   |

**Antenna**

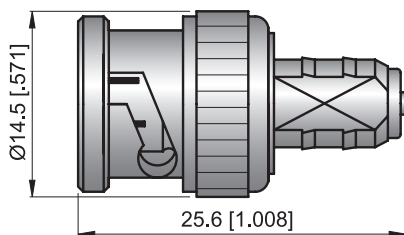
STRAIGHT PLUG, Crimp



| Part Number.   | Cable Type | Dimension |   |
|----------------|------------|-----------|---|
|                |            | A         | B |
| BNC-C5611104A1 |            |           |   |

**Antenna**

STRAIGHT PLUG, Solder



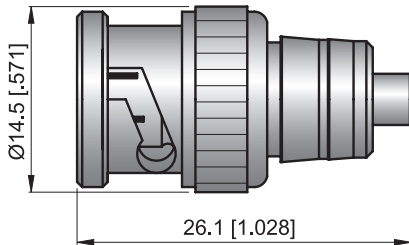
| Part Number.   | Cable Type | Dimension |   |
|----------------|------------|-----------|---|
|                |            | A         | B |
| BNC-C5612105A1 |            |           |   |

\*Reverse Polarity Series



## Antenna

STRAIGHT PLUG, Crimp

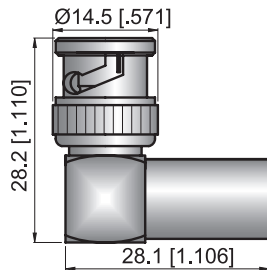


| Part Number.   | Cable Type | Dimension |   |
|----------------|------------|-----------|---|
|                |            | A         | B |
| BNC-C5611107A1 |            |           |   |

\*Reverse Polarity Series

## Antenna

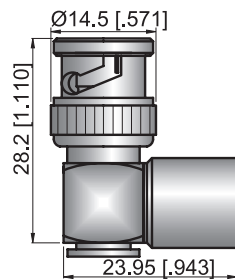
RIGHT ANGLE PLUG, Clamp



| Part Number.   | Cable Type | Dimension |   |
|----------------|------------|-----------|---|
|                |            | A         | B |
| BNC-C5627110A1 |            |           |   |

## Antenna

RIGHT ANGLE PLUG, Clamp



| Part Number.   | Cable Type | Dimension |   |
|----------------|------------|-----------|---|
|                |            | A         | B |
| BNC-C5627109A1 |            |           |   |